

24-CHANNEL SEISMOGRAPH - 24 BIT PASI MOD. GEA 24

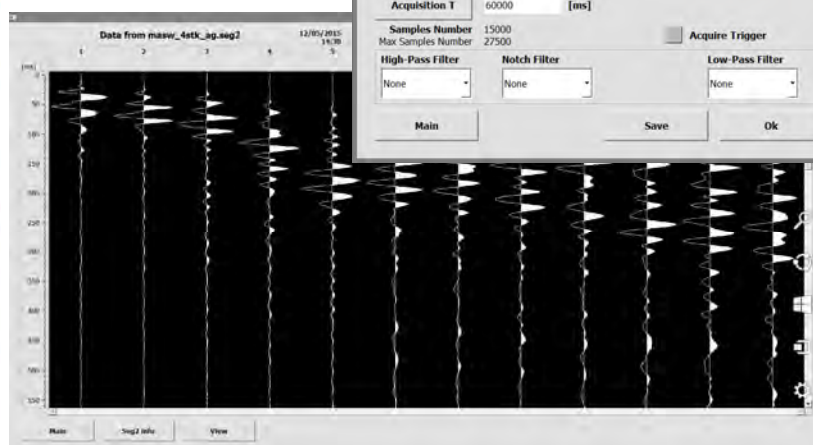
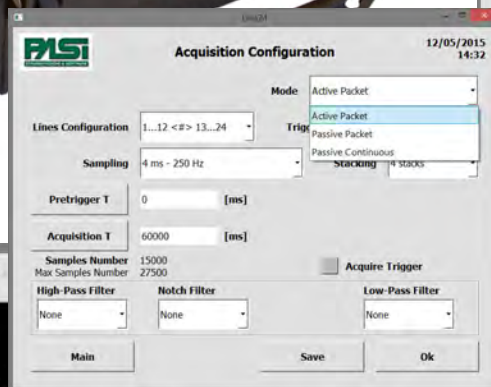
www.pasigeophysics.com

Easy to use
Compact-size
Mini Price!!!

GEA24 is a compact-sized **24-channel seismograph** (2 units can be serialized for a total of 48 chs) with a **24 bit** acquisition board and **USB interface for external PC** (not included). Suitable for so many applications, GEA-24 is a really affordable solution for all professional uses.

Applications:

- REFRACTION
- SHALLOW REFLECTION
- SURFACE WAVES (MASW, Re.Mi., Vs30, MAAM, ESAC, etc.)
- HVSR / VIBRATIONS
- DOWNHOLE (with borehole 3D-geophones **Mod.GFA** or **DHTG**)
- CROSSHOLE applications (with borehole 3D geophones **Mod.GFA** or **DHTG** + **P/S wave borehole seismic source Mod.CHE**)



5 years
warranty

Gea24 connected with
tablet PC



P.A.S.I. S.R.L. — Via Galliari 5/E — 10125 Torino - Italy
tel. +39 (0)11 6507033 - sales@pasisrl.it - www.pasigeophysics.com

24-CHANNELS SEISMOGRAPH - 24 BITS

PASI MOD. GEA 24

www.pasigeophysics.com

TECHNICAL SPECIFICATIONS GEA 24

Number of channels	24 chs + trigger (AUX ch) - 2 units can be serialized for a total of 48 chs
Data Conversion	24 real bits Sigma-Delta ADC (compatible with analog geophones of any resonance frequency)
Sampling intervals	Active Acquisitions: - up to 125 microsec (8000sps) on 24 chs, - up to 31.25 microsec (32000sps) on 6 chs Passive Acquisitions: - up to 4000 microsec (250sps) on 24 ch - up to 500 microsec (2000sps) on 3 chs
Sampling rate	125 Hz—32 kHz (selectable)
Acquisition length	27500 samples @ 24 chs (+aux) 174500 samples @ 3 chs (+aux) Unlimited samples for continuous acquisitions
Preamp. gain	0/52 dB, software selectable
Stacking	Unlimited number of stackings
Input impedance	2MΩ // 22nF
Dynamic Range	144dB (system); >117db (instantaneous, measured @1ksps)
Frequency Range/Band	DC to 6.8 kHz
Crosstalk Reduction	Optimum design of printed circuit board w/use of twisted geophone cables
Distortion	0.007% @16kHz
Bandwidth -3dB Bandwidth +/- 0.1dB	6.8kHz@32ksps - 0.21 kHz@1ksps 3.5 kHz@32ksps - 0.11 kHz@1ksps
Filters	Low Pass:125-200-500-1000Hz High Pass: 10-20-30-40-50-70-100-150-200-300-400Hz
Notch Filter	50-60Hz + harmonics
Trigger	Normally closed contact, normally open contact (e.g. with explosive), analog signal (starter geophone, hammer switch), TTL triggering. Trigger sensibility adjustable via software
Trace Display	Wiggle-trace / variable area
Noise-monitor	All channels + trigger; real time display
AUX channel	1x (for trigger or any other input signal)
External interface	1x USB 2.0 to external PC (not included)
Data format	SEG2 (ASCII, SEG Y and others, with ext.conversion software supplied)
Power supply	5VDC from USB, 0.25A
Operating/Storage Temp.	-30°C to +80°C
Humidity	80% relative humidity, non condensing
Dimension	24cm x19.5cm x11cm
Weight	2 Kg

Available accessories:

- Seismic Cables
- Horizontal and Vertical Geophones
- 3D Land geophones
- Striking plate for "P and/or "S" waves
- Seismic Energizer "ISOTTA"
- 3D Borehole geophones
- Crosshole energizer
- Hammer Switch / Starter Geophone
- GPS option (georeferencing & timing)
- Radiotrigger

P.A.S.I. S.R.L. — Via Galliari 5/E — 10125 Torino - Italy
tel. +39 (0)11 6507033 - sales@pasisrl.it - www.pasigeophysics.com

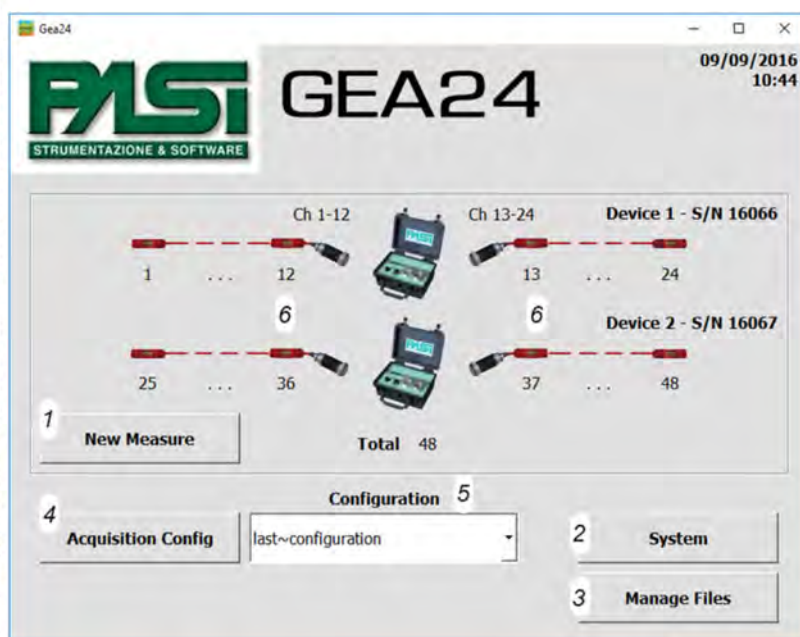
Specifications subject to change without notice

GEOPHYSICS

PASI

24-CHANNELS SEISMOGRAPH - 24 BITS PASI MOD. GEA 24 - 48ch configurations

www.pasigeophysics.com

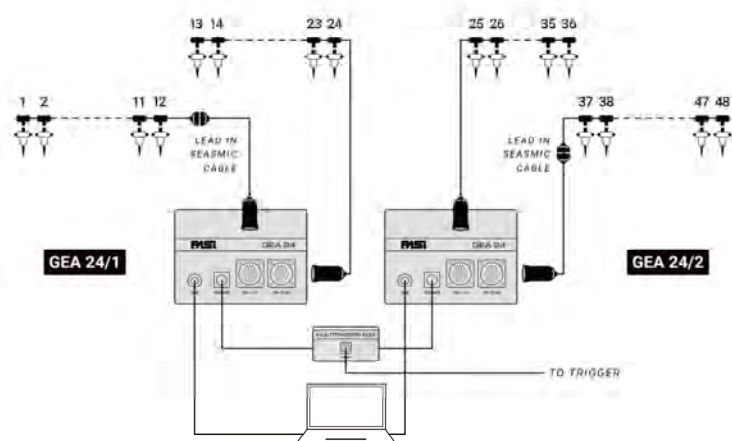


2XGEA24 = THE REAL SOLUTION FOR 48 CHANNELS

2XGEA24 units can be serialized for a total of **48 chs** and connected to the same external PC by using the appropriate USB cables (2x USB ports required).

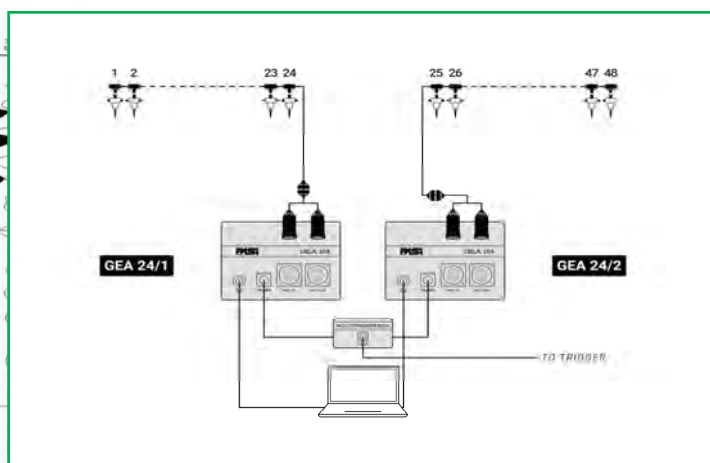
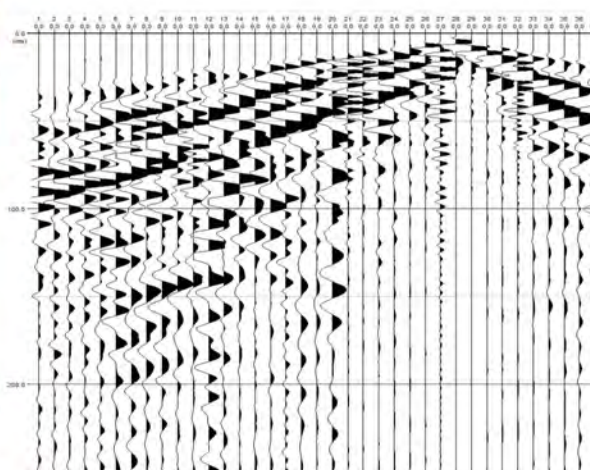
GEA24 will automatically detect the presence of the two systems and identify their related serial numbers. Step by step, GEA24 data acquisition software will allow you to design the line geometry in relation to the seismic cables (12 or 24 channel cables) and to the 1-48 geophone sequence you are using in the field.

The **Multitrigger Box** - connected to the first GEA24 unit - will assure the perfect synchronization of the trigger impulse for all the 48 channels. **PASI Radiotrigger** would be "the icing on the cake" to complete your 48-channel system, in alternative to long trigger extension cables.



↑ 2xGEA24 units can be connected to 4x 12-ch seismic cables, with additional 2x lead-in seismic cables

2xGEA24 units can be connected to 2x 24-ch seismic cables (no additional lead-in cables required)



P.A.S.I. S.R.L. — Via Galliari 5/E — 10125 Torino - Italy
tel. +39 (0)11 6507033 - sales@pasisrl.it - www.pasigeophysics.com

Specifications subject to change without notice

PASIGEOPHYSICS

PASIGEOPHYSICS